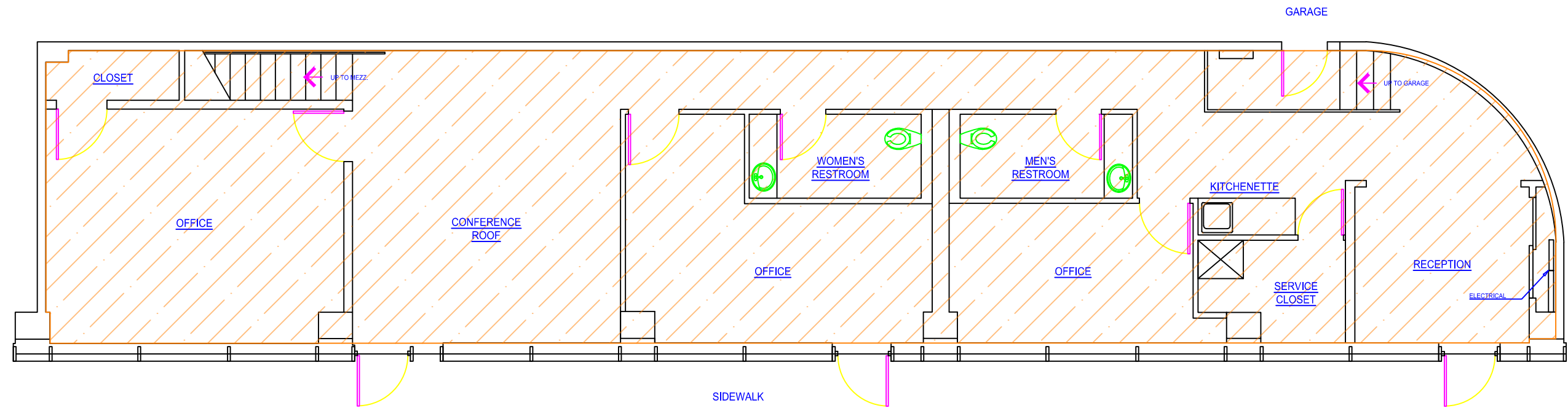


MEZZANINE LAYOUT
SCALE: 1/8" = 1'-0"



FIRST FLOOR LAYOUT
SCALE: 1/8" = 1'-0"

GENERAL LEGEND	
PLAN VIEW	DESCRIPTION
	Available Office Space Total Area: 1,790 sq. ft.

EXHIBIT A



TOLEDO LUCAS COUNTY PORT AUTHORITY				PORT LAWRENCE PARKING FACILITY	
REVISIONS				FLOOR PLAN	
NO.	DATE	REMARKS	BY	DESIGNED	DRAWN